

Kawasaki Teryx Winch Mount

Winch Mount

PART # 100700

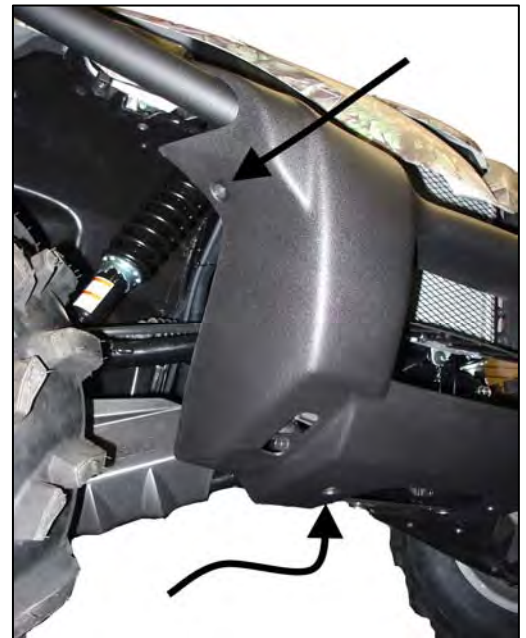
Kit Components:

Qty	Part Description
1.....	Winch Mount
1.....	Wide Winch Plate
1.....	Reversible Fairlead Bracket
2.....	3/8"x 1 1/4" Flange Bolt
4.....	3/8"x 1" Carriage SN Bolt
6.....	3/8" Nylock Nuts
6.....	3/8" SAE Flat Washers
3.....	5/16" x 1" Bolt
3.....	5/16" Lock Washer

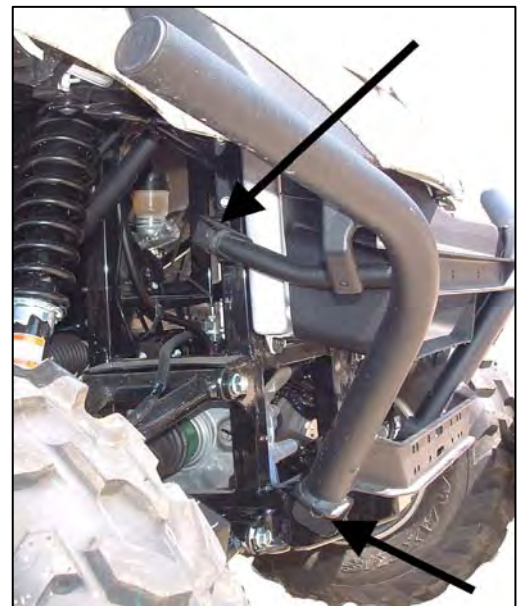
INSTALLATION INSTRUCTIONS:

1. Remove the front plastic bumper cover, by removing the (4) screws as shown in *Figure 1*.
2. Remove the front bumper, by removing the (4) bolts as shown in *Figure 2*.
3. Assemble your fairlead to the fairlead bracket using the appropriate hole pattern and the hardware that was supplied with your winch as shown in *Figure 3*.
4. Skip to Step 5, if you are installing a wide 4k plus winch with a 3.00" x 6.60" bolt pattern. Assemble your winch to the winch mount using the hardware that was supplied with your winch as shown in *Figure 3*. Skip to Step 6.
5. Wide winch install instructions: (see *Figure 4*)
 - Assemble your winch to the Wide Winch Plate that was supplied with your mount using the hardware that was supplied with your winch.
 - Loosely install the winch mount to your Teryx using the supplied 3/8" carriage bolts and hardware as shown in *Figure 5*.
 - Assemble your winch and Wide Winch Plate to the winch mount using the supplied (3) 5/16" bolts and lock washer into the weld-nuts on the bracket. (you may need to pull some cable out to get the bolts in) (skip to Step 7)

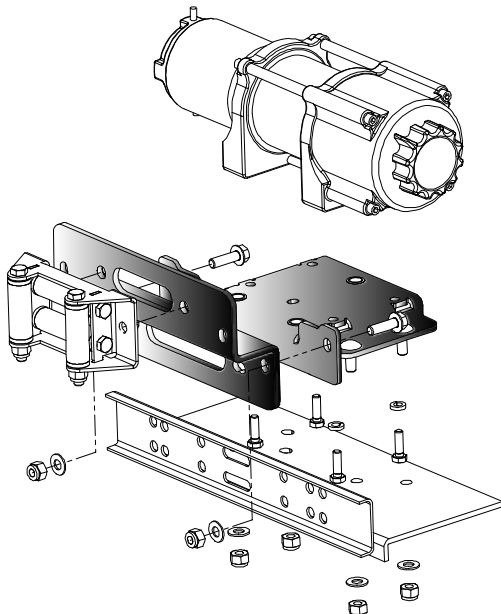
NOTE: The fairlead bracket is reversible to accommodate the standard 4.875" bolt pattern fairleads and the larger 6.60" bolt pattern fairlead bracket found on wide 4000lbs plus winches.



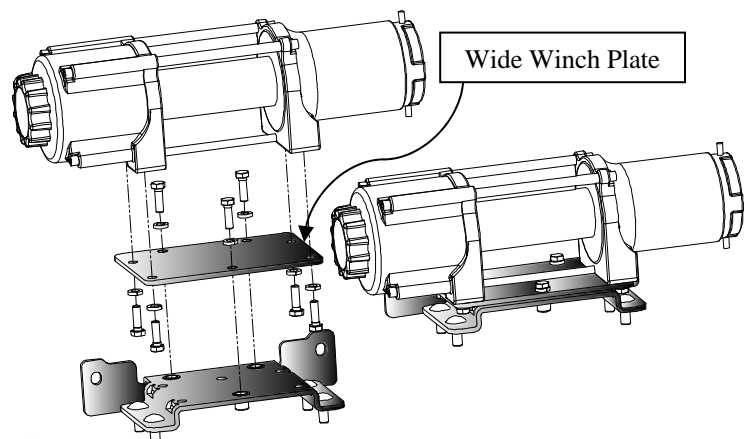
"Figure 1"
Remove Front Plastic Bumper Cover



"Figure 2"
Remove the Front Bumper



"Figure 3" 4.875" Standard Bolt pattern Set-up



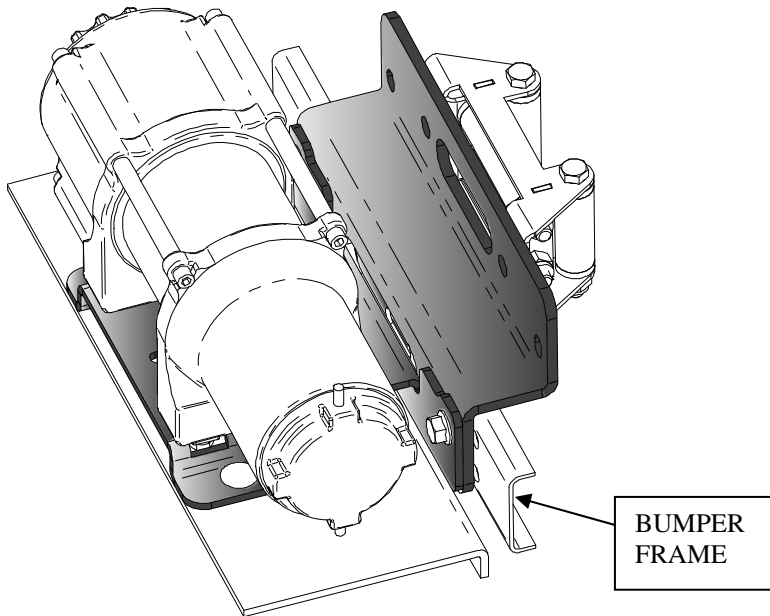
1

"Figure 4" Wide Bolt pattern Set-up

6. Place the winch and mount assembly into location with the carriage bolts going through the frame holes on the machine as shown in *Figure 5*.
7. Once the winch assembly is in location and the carriage bolts are through the appropriate holes you can then assemble the washers and nylock nuts to the carriage bolts, but do not tighten at this time.
8. Replace the front bumper that was removed in Step 2.
9. Place the fairlead bracket into location as shown in *Figure 6* (between the winch mount and the bumper frame) and assemble the winch mount to the fairlead bracket and bumper frame using the supplied 3/8" hardware.
10. Tighten the carriage bolts from Step 5.
11. Replace the front plastic bumper cover that was removed in Step 1.
12. Using the instructions provided with your winch, wire accordingly.



“Figure 5”
Winch Mount Assembly in Position

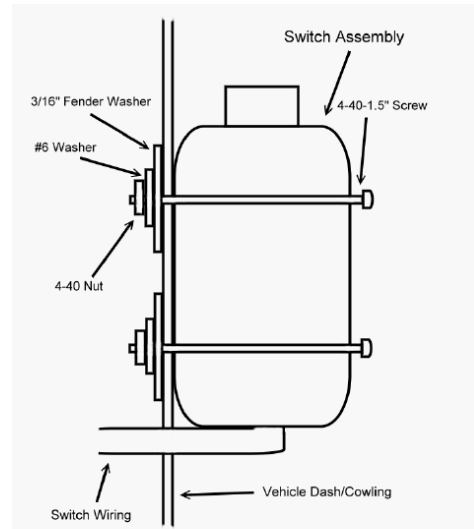


“Figure 6”
Fairlead Bracket in Position

Mini-Rocker Switch Hardware Kit

This allows you to mount your usual handle bar mounted switch to almost any desired location.

- a. Remove handlebar mount hardware from the switch.
- b. Locate desired mounting location
- c. Mark and drill two switch holes through dash using switch housing as a template
- d. Drill a 3rd hole for the switch wiring.
- e. Assemble per Figure 7



Optional Switch Mount Instructions*

“Figure 7” Mini-Rocker Mounting

