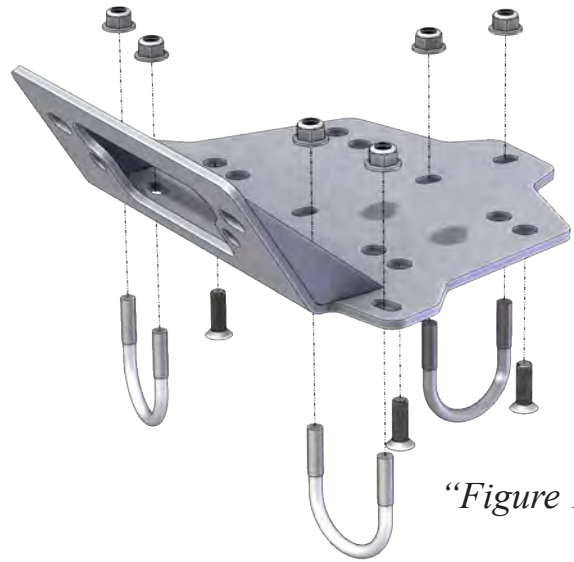


# CAN-AM MAVERICK

Winch Mount            PART # 101055  
Hardware Kit: HK-308, HK-031

## Kit Components:

Qty.	Part Description
1.....	Winch Mount Plate
4.....	M8-1.25 X 25mm Flat Head Socket Cap Screw
3.....	5/16"-18 U-Bolt
6.....	5/16"-18 Flanged Nylock Nut
1.....	UTV Mini Rocker Kit (HK-031)

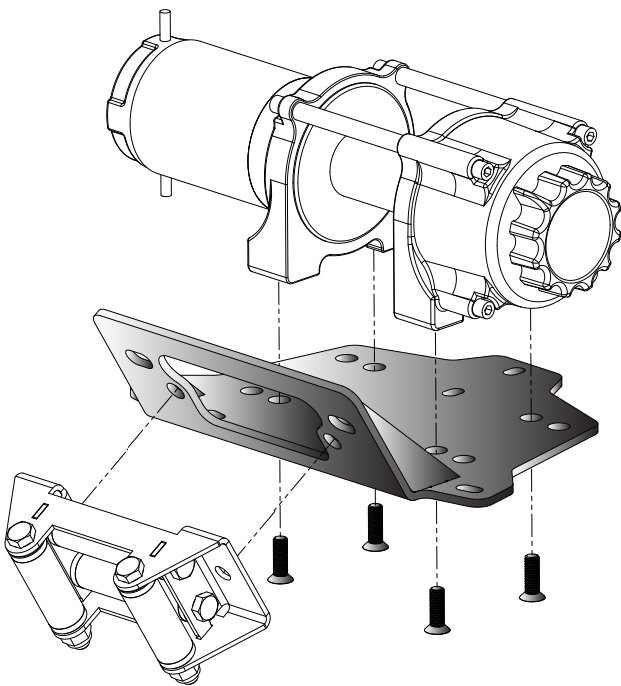


*“Figure 1”*

## INSTALLATION INSTRUCTIONS:

1. Take off the front bumper by removing the long bottom bolt and 2 top bolts as shown in Figure 2. Save hardware for reinstall later.
2. Install Winch and Roller Fairlead to the Winch Mount Plate using the M8 Flat Head Screws Provided with the hardware kit and the instructions provided with your winch. See Figure 3.

*Note: If installing a 2 hole winch the rear hole on the winch will use the U-bolt to secure the winch. See Figure 4 on Page 2.*



*“Figure 3” Winch Install*



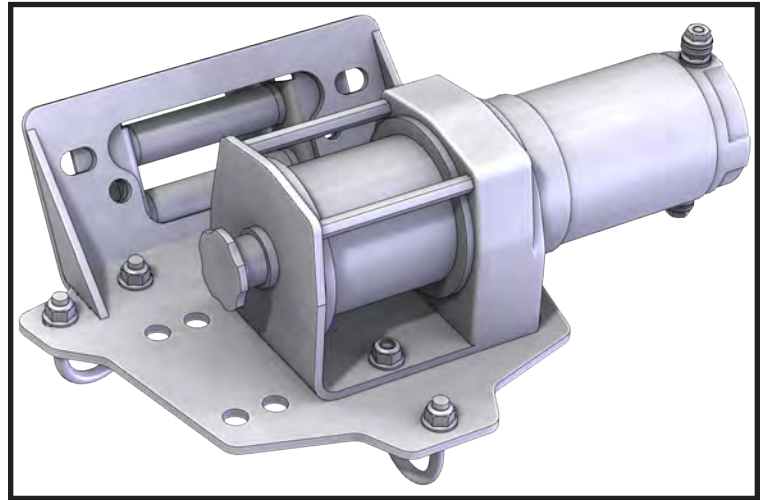
*“Figure 2” Bumper Removal*

3. Install Mount and Winch Assembly to the bumper using the U-bolts provided with the hardware kit as shown in Figure 5.

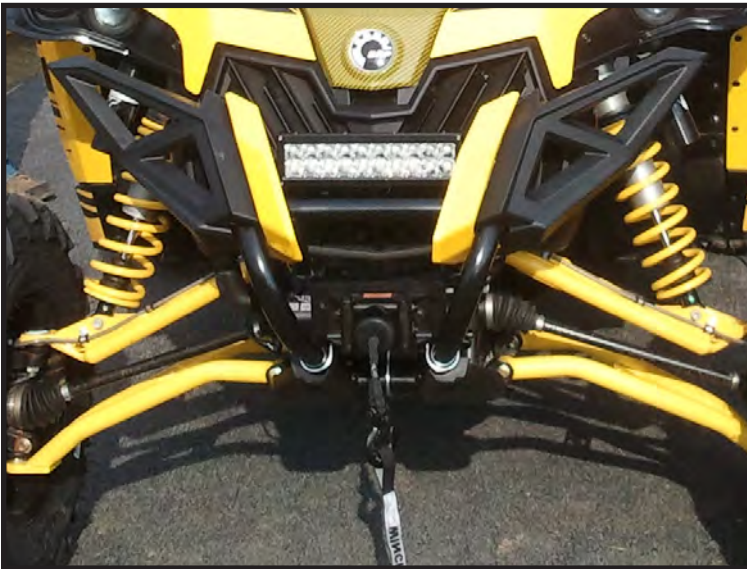
*Note: The heads of the screws holding the winch will hit the bumper tubes.*

4. Tighten all U-Bolts.
5. Reinstall front bumper following step one in reverse order. See Figure 6.
6. Use the instructions provided with your winch, wire accordingly.

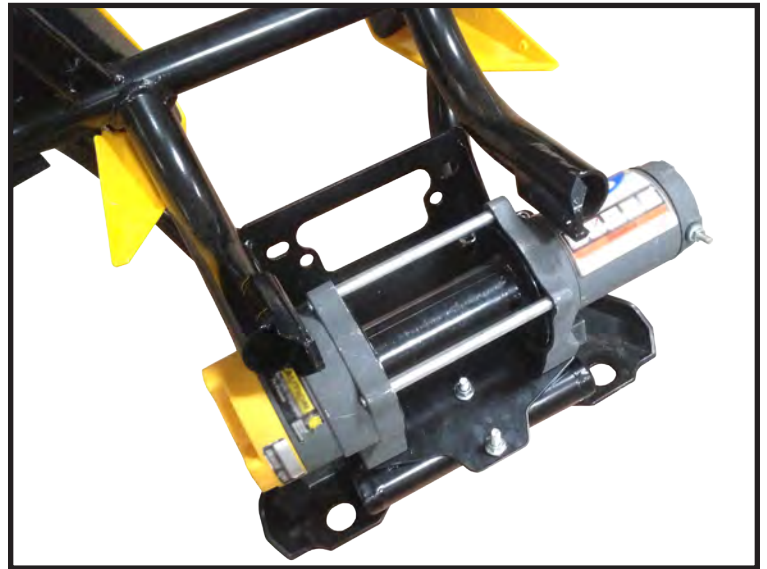
*Note: See Page 3 for wiring tips.*



*“Figure 4” Winch/Mount Install*



*“Figure 6” Fully Installed*



*“Figure 5” Winch/Mount Install*



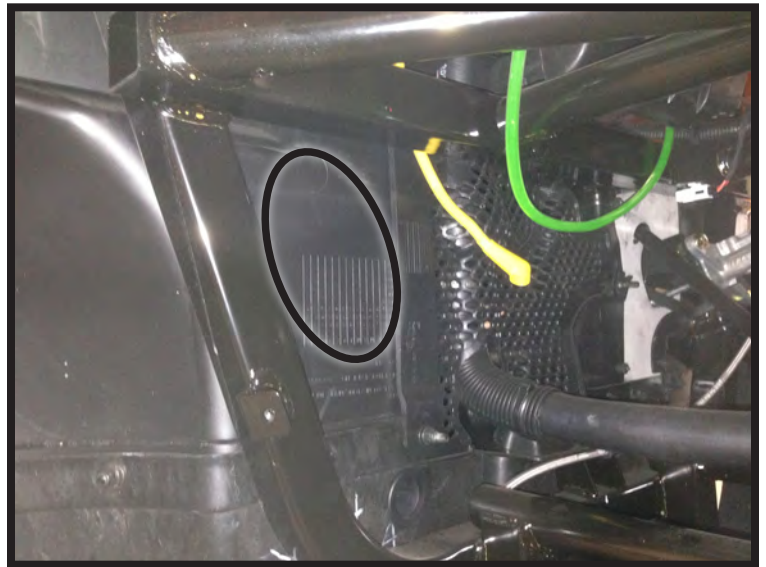
## WIRING INFORMATION

1. For contactor location please see “Figure 7”.

*Note: This is located behind the radiator on the passenger side of the machine. This is just a suggestion that will work with the wiring provided with the winch.*

*The wires will need to be switched for this machine. The longer wires (Blue/Yellow) will be used to go from the battery to the contactor. The shorter wires (Black/Red) will be used to go from the winch to the contactor.*

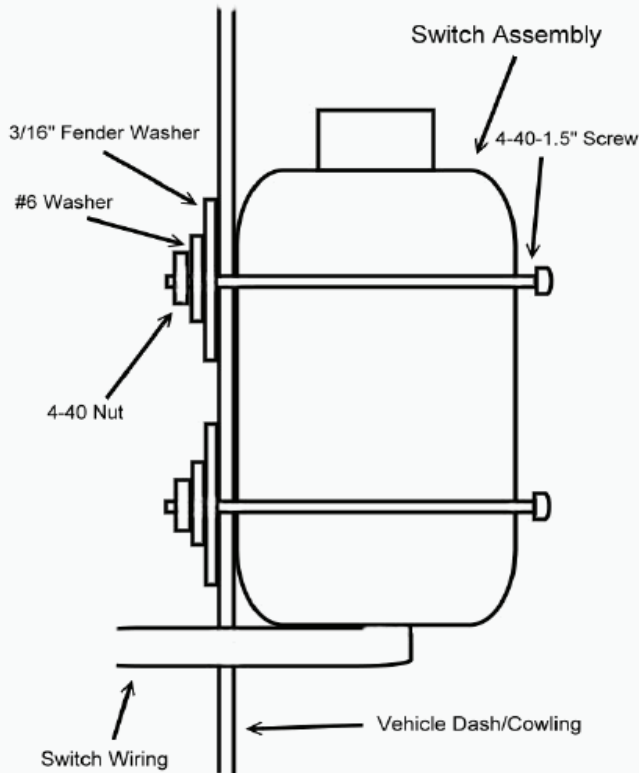
2. Mini-Rocker Switch Hardware kit. This allows you to mount your usual handle bar mounted switch to almost any desired location.
  - a. Remove handlebar mount hardware from the switch.
  - b. Locate desired mounting location
  - c. Mark and drill two switch holes through dash using switch housing as a template
  - d. Drill a 3rd hole for the switch wiring.
  - e. Assemble per Figure 9.
3. Find a location that suits your purposes for the mini-rocker switch and hand remote.
4. Wire the red ignition wires from the controllers to a key controlled wire. Usually a good spot for this is the red wire on the accessory plug.



“Figure 7” Contactor Location



“Figure 8” Battery Location  
(Battery is located under panel in the bed.)



### Optional Switch Mount Instructions\*

“Figure 9” Mini-Rocker Mounting