

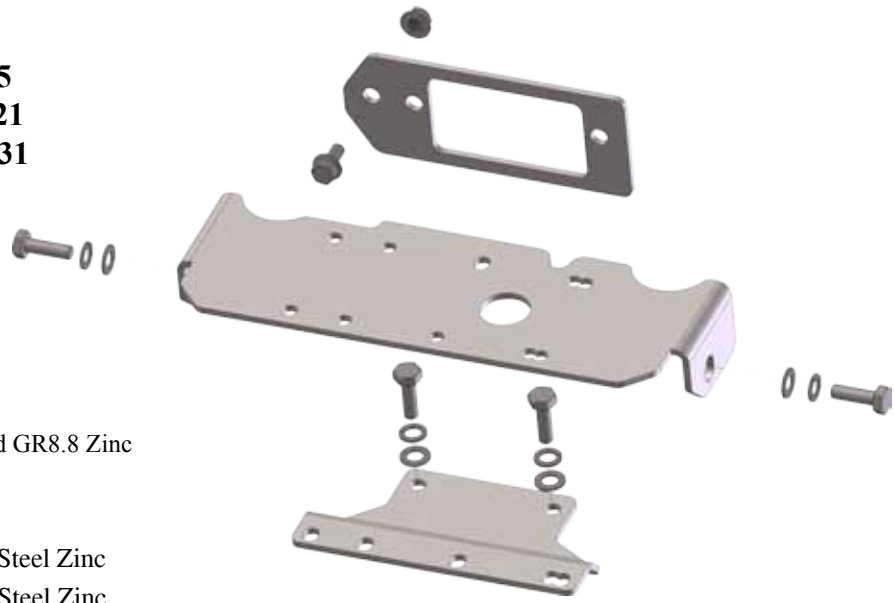
# 2016 Honda Pioneer 1000

## Winch Mount

**PART # 101285**  
**Hardware Kit: HK-321**  
**HK-031**

### Kit Components:

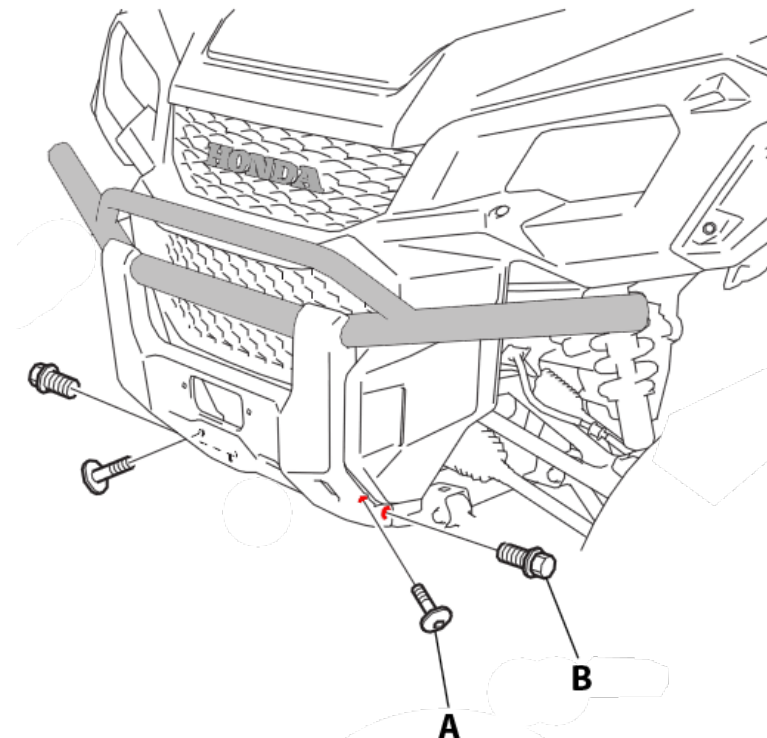
Qty.	Part Description:
1.....	Winch Mount Plate
1.....	Winch Mount Support Bracket
1.....	Fairlead Converter Mount Plate
4.....	M10-1.25 X 30MM Hex Bolt Fine Thread GR8.8 Zinc
4.....	M10 Flat Washer Zinc
4.....	M10 Lock Washer Zinc
1.....	3/8"-16 X 3/4" Hex Flanged Bolt GR5 Steel Zinc
1.....	3/8"-16 Hex Flanged Nylock Nut GR5 Steel Zinc
2.....	#4-40 X 1.50" Screw
2.....	#4-40 Nylock Nut
2.....	#6 Flat Washer
2.....	3/16" Fender Washer



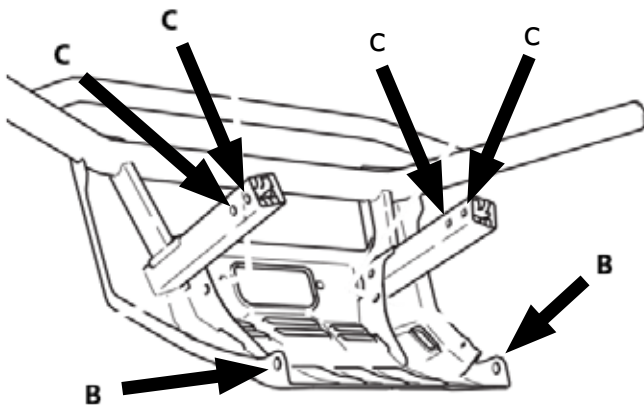
**“Figure 1” Exploded view**

## INSTALLATION INSTRUCTIONS:

1. Start by removing the two cap screws (A) holding the plastic to the bumper on each side. Remove the two bolts (B) on the bottom of the bumper as shown in *Figure 2 & 3*, and the four bolts (C) in the bumper tube (as shown in *Figure 3*).



**“Figure 2” Bumper bolt location**



**“Figure 3” Bumper bolt location**

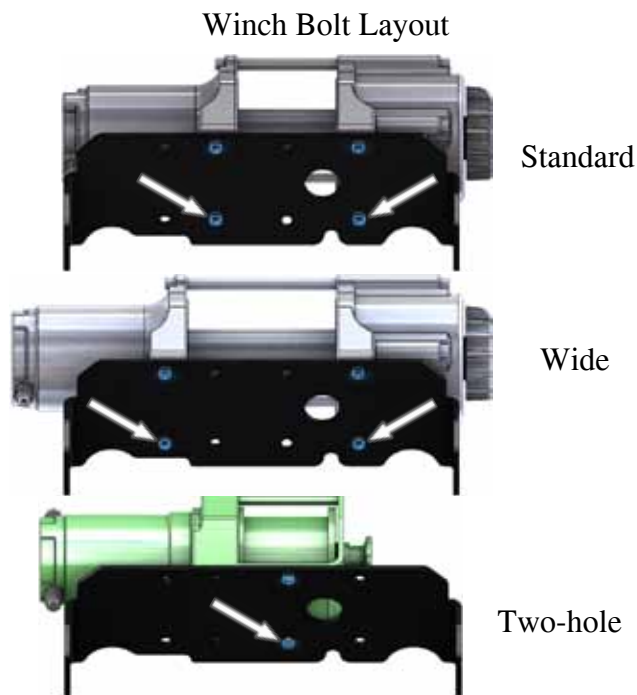
- Remove the two bolts from the differential bracket as shown in *Figure 4*. Assemble the bottom winch mount support bracket as shown in *Figure 5* with the supplied M10 bolts, washers, and lock washers shown in figure 1. Tighten these bolts as you will not have access to them after the winch and winch mount are assembled and in place.
- Connect the winch cables (longer wires, typically blue and yellow) to the winch leads before mounting to the winch mount plate as shown in *Figure 6*. **NOTE: If winch terminals come close to hitting the frame, you might have to rotate end cap and motor housing 90 degrees.**
- Attach your winch to the winch mount bracket with the shorter hardware supplied with your winch. **Only attach the rear bolts!** Tighten these bolts as you will not have access to them after the winch and winch mount are assembled and in place.



*“Figure 4” Differential bolts*

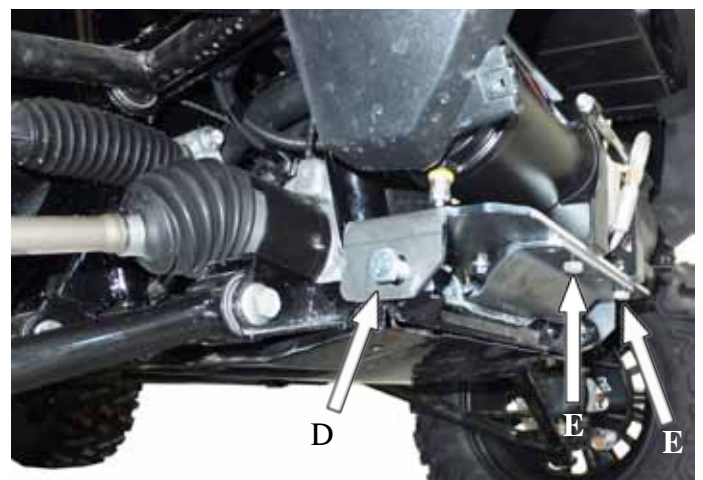


*“Figure 5” Mount support bracket attached with supplied hardware*



*“Figure 6” Attach winch leads, attach winch to Mount Plate*

- Place the winch assembly into the location as shown in *Figure 7* on top of the support bracket. Temporarily place supplied M10 Bolts (D) through the mount loosely to assure correct alignment as shown in *Figure 7*. Finish attaching your winch with the longer hardware supplied with your winch through the two winch plates. Tighten these two bolts (E). Remove the M10 bolts (D) you will need these when re-installing the bumper.



*“Figure 7” Attach Mount plate & winch assembly to the support bracket*

6. Attach Fairlead to the front bumper.

**Standard Fairlead 4.875" bolt pattern -**

First attach the Fairlead convertor mount plate with the 3/8"-16 nut and bolt on the passenger side as shown in Figure 8. Attach your Fairlead to the mounting plate as shown in Figure 9 with the hardware included with your winch.

**Wide Fairlead 6.00" bolt pattern -**

Attach your fairlead directly to the bumper as shown in Figure 10 using the hardware included with your winch.

7. Rotate the clutch cap on your winch to the "Free Spool" position and pull 2-3 feet of cable out. Feed the cable through the fairlead mounted to your bumper.
8. Re-install the front bumper. Refer to step 1 for bolt locations. You will use bolts (D) provided with your winch mount in place of the stock bolt (B) previously removed. You will use the rest of the stock hardware to re-install the bumper.



*"Figure 8" Fairlead Mount Plate install (Standard Fairlead)*



*"Figure 9" Fairlead install (Standard Fairlead)*



*"Figure 10" Fairlead install (Wide Fairlead)*

## WIRING INSTRUCTIONS:

1. To make routing wires and installing your contactor easier, temporarily reposition the coolant overflow tank by lifting/pulling it up to pop it out of its hanging bracket. (see *Figure 11*)

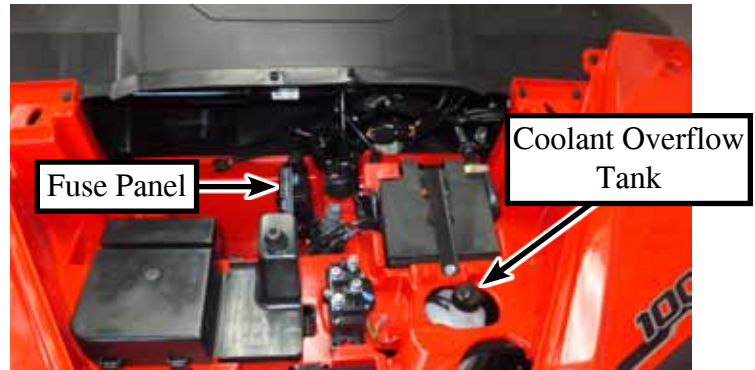
2. Mount Contactor. See *Figure 11 & 12* for suggested location. Mark holes out and drill. Attach contactor using hardware supplied with your winch.

3. Rocker Switch - red/power wire-

-Unclip the fuse panel from the body (see *Figure 11 & 14* for location). Locate the White wire with Black stripe next to the heavy red power wire as shown in *Figure 13*. **Note: The ignition controlled accessory wire may be red with a black stripe on some machines.** Verify you have the correct wire by using a test light. Test light should only illuminate when key is on.

-Connect the red wire from your rocker switch to the white with black stripe ignition controlled accessory wire using the supplied quick connector or other means. (as shown in *Figure 13*)

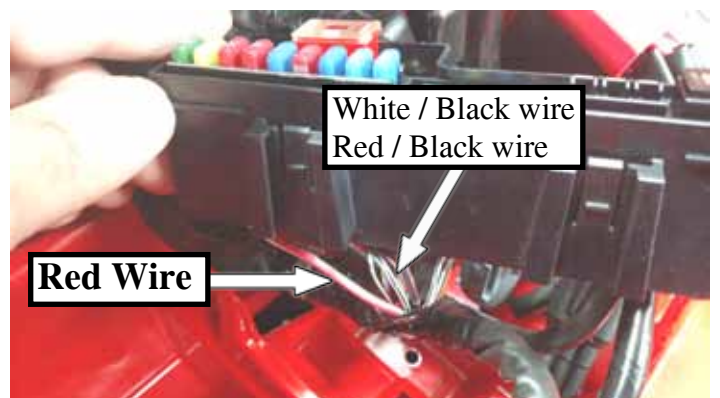
4. Use the wiring instructions in your winch manual and finish wiring accordingly.



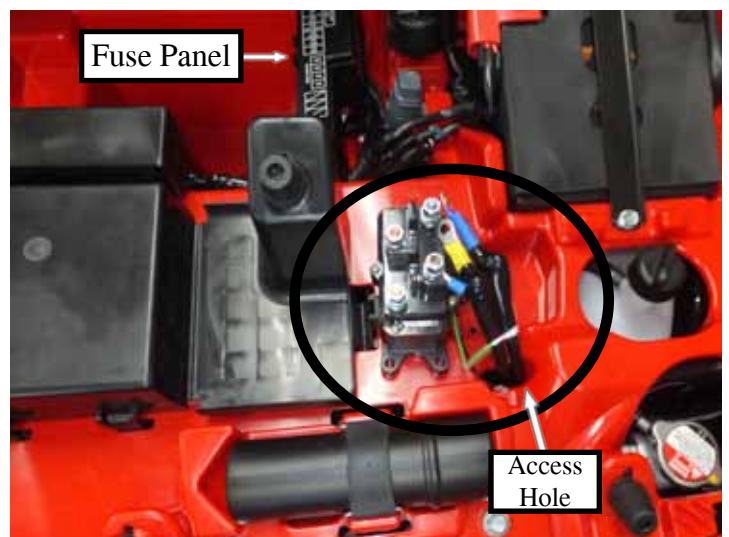
*“Figure 11” Coolant overflow tank location & suggested contactor location*



*“Figure 12” Contactor installation*



*“Figure 13” Accessory wire location*



*“Figure 14” Winch cables routed to contactor*

