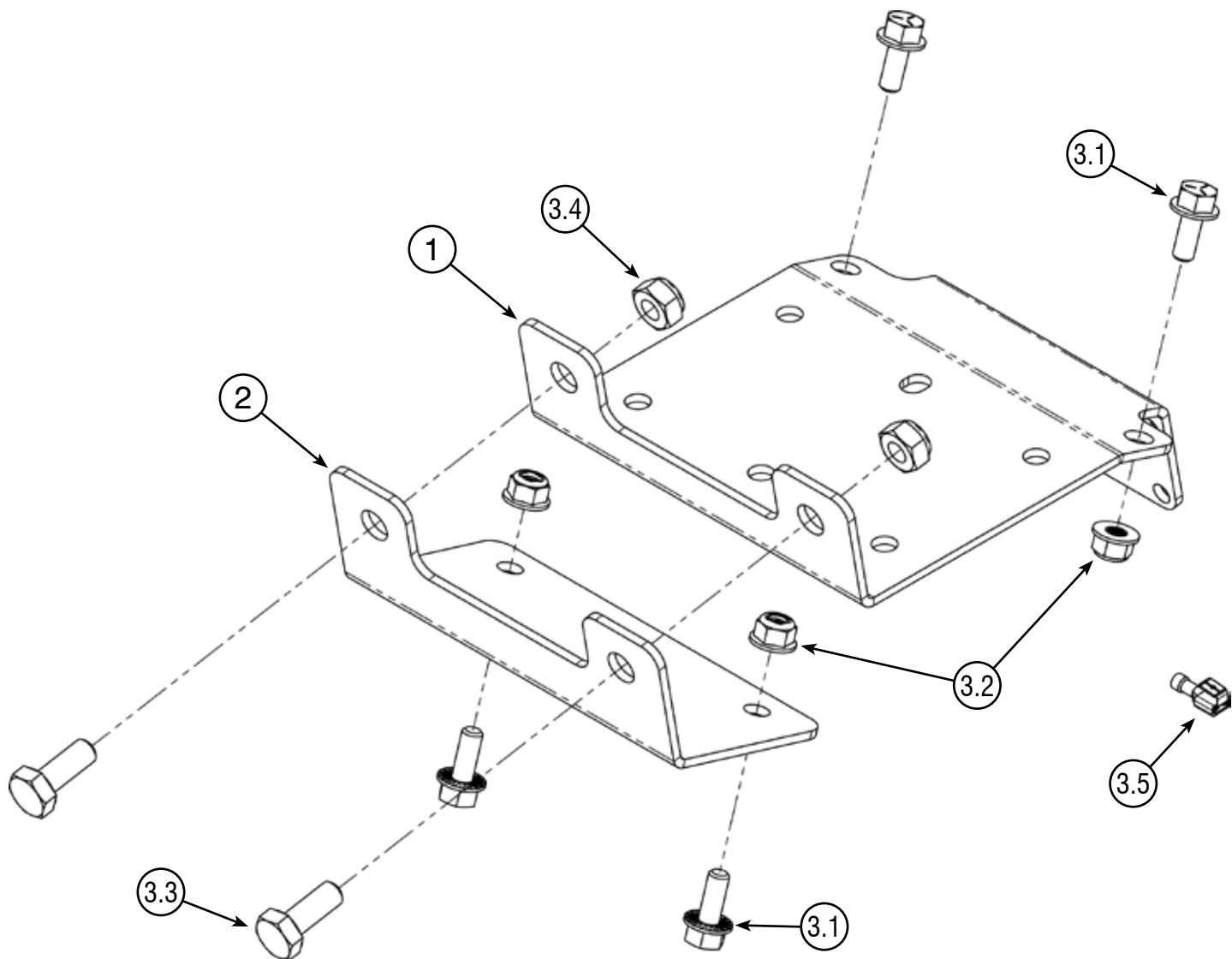


KAWASAKI BRUTE FORCE 450

WINCH MOUNT

PART #102275 Rev A



Kit Components:

Item #	Qty.	Description	Item #	Qty.	Description
1	1	Winch Mount Bracket (102276)	3.2	4	5/16"-18 Hex Nut Flange Nylock
2	1	Support Bracket (102277)	3.3	2	M10-1.50 X 25 Hex Bolt
3	1	Hardware Kit (HK-449)	3.4	2	M10 x 1.50 Hex Nut Nylock
3.1	4	5/16"-18 x .75 Hex Bolt Flange	3.5	1	22-18 Insulated Piggyback Crimp-On Terminal



INSTALLATION INSTRUCTIONS

Notice

Torque bolts to ANSI Specs (or OEM specs if applicable), unless otherwise stated. After the first use and at the start of each season, check torque.

Note: Make sure all hardware needed to complete this mount is in the package. Thoroughly read through and understand the instructions before installing.

Installation Instructions

1. Remove the front plastic fascia by unscrewing 8x bolts (A) as shown in **Figure 1**.
2. Attach the winch contactor to the winch mount bracket (1) using the hardware supplied with the winch. Connect the winch and battery wires to the contactor now for easier access. See **Figure 2**.
3. **IMPORTANT:** Loosely place the winch mount bracket (1) onto the machine's frame before attaching the winch. Then, slide the winch into position and secure it using the winch bolts provided with the winch. The motor end of the winch should be on the passenger side of the machine. See **Figures 2, 3, and 5**.

NOTE: For 2 hole winches, use the center 2 holes on the winch mount bracket (1) for bolting winch into place.

4. With the winch installed on the winch mount bracket (1), loosely install rear bolts (3.1) and nuts (3.2) through the tabs on the frame (B). See **Figures 3 and 5**.
5. Position the support bracket (2) underneath the winch mount bracket (1). Loosely install bolts (3.1) and nuts (3.2) through the frame tabs (C). See **Figures 4 and 5**.
6. Attach the fairlead by aligning it with the support bracket (2), winch mount bracket (1), and securing it with bolts (3.3) and nuts (3.4). See **Figures 4 and 5**.
7. Tighten all hardware evenly.

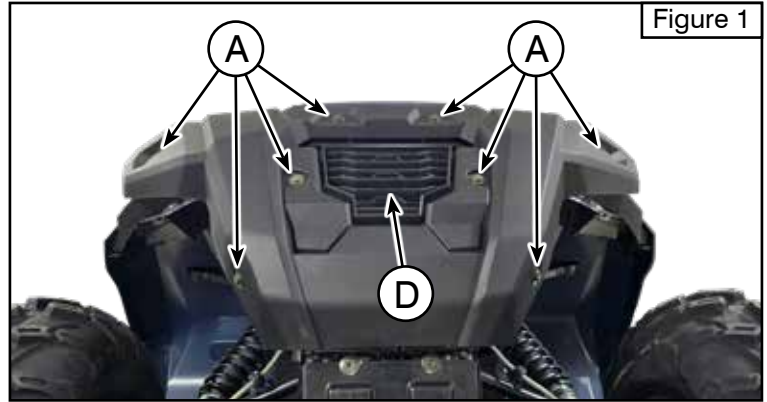


Figure 1

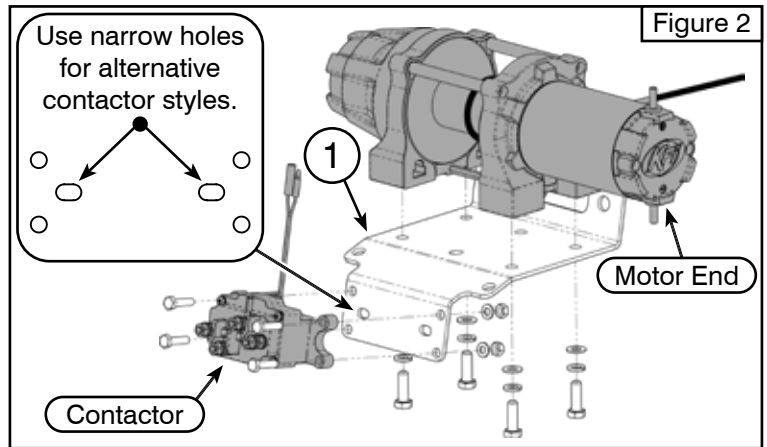


Figure 2

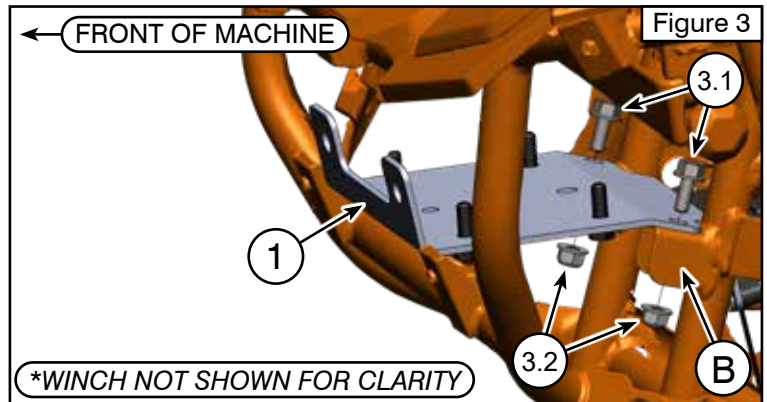


Figure 3

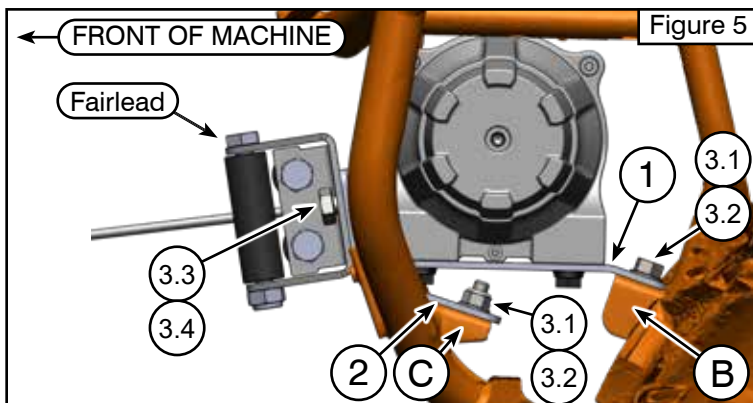


Figure 5

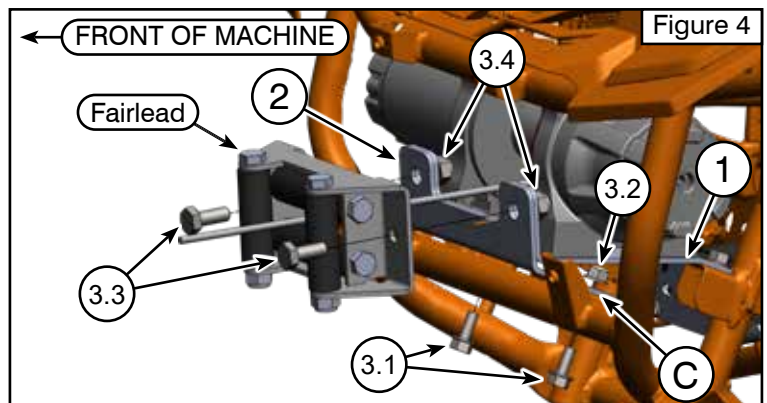


Figure 4

8. Using a utility knife, carefully cut out the grill insert (D) shown in **Figures 1 and 6**.
9. Reinstall the front plastic fascia using the 8x bolts (A) previously removed in Step 1.



WIRING INSTRUCTIONS

10. Wire the winch and switch by referencing the winch manual.
11. The contactor can be attached to the mount (As shown in Step 2) or relocated as needed. See **Figure 2**.
12. Access the battery under the passenger-side wheel well cover.
13. Using the Alternate wiring diagram, route the battery wires up the frame on the passenger side.
14. The mini dash rocker switch can be mounted to the handlebars next to the headlight switch.
15. Remove the cowl below the headlight housing and locate the backside of the 12v accessory plug. See **Figure 7**. Unplug the red wire (machine key hot) terminal from the back of the plug.
16. Crimp the piggyback connector (3.5) onto the winch key hot wire (red) for the switch. Plug the piggyback connector (3.5) into the location of the unplugged red wire from Step 15.
17. Plug the original red wire (machine key hot) from the 12v accessory plug onto the open terminal on the piggyback plug (3.5).
18. Verify the installation: Ensure all wires are correctly connected, all bolts/nuts are tightened, and the winch operates as expected.

Alternate Wiring Diagram

