

# HONDA BIG RED

Plow Mount

PART #105375

REV. E.1

## Kit Components:

Item #	Qty.	Description
1	1	Plow Mount (106263)
2	1	Bolt Plate (105387)
3	1	Hardware Kit HK-134
3.1	2	M10-1.25 X 30 Hex Bolt GR8.8
3.2	2	M10 Lock Washer
3.3	4	3/8"-16 X 1.00" Hex Bolt Flang GR5 Serrated
3.4	2	3/8"-16 Hex Nut Flange Nylock GR5

**Note:** Make sure all hardware needed to complete this mount is in the package. Thoroughly read through and understand the instructions before installing.

## Installation Instructions

1. Remove bolts (A) on front lower panel as shown in Figure 2.
2. Place plow mount over front of the machine and install bolts (3.1) with lock washers (3.2) as shown in Figures 1 & 4.
3. Place bolt plate (2) under the front differential over the square cutouts shown in Figure 3. Secure plow mount (1) to bolt plate (2) using bolts (3.3). See Figures 1 & 4.

**Note:** For extra strength you may want to drill holes and secure with bolts (3.3) and nuts (3.4) as shown in Figures 1 & 4.

4. Tighten hardware evenly.
5. See UTV Plow Tube System instruction manual for tube attachment.

Figure 1

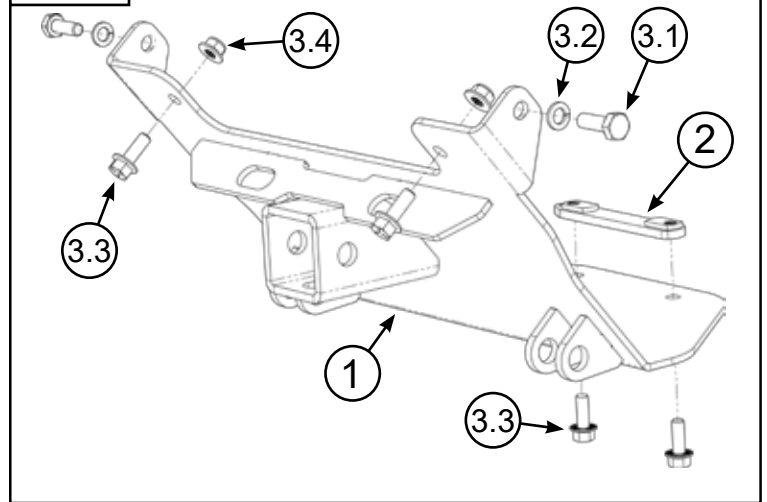


Figure 2

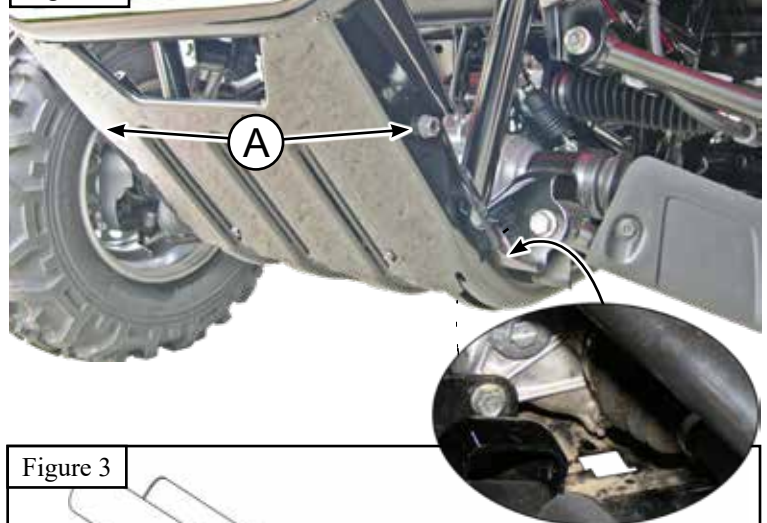


Figure 3

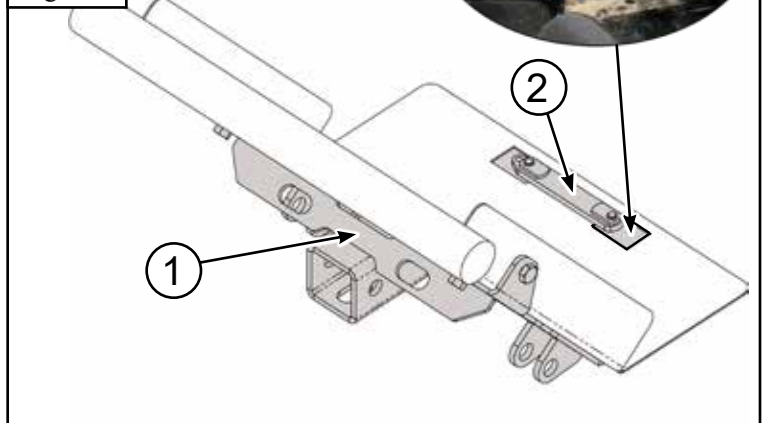


Figure 4

