

CAN-AM MAVERICK

PLOW MOUNT

Plow Mount

PART # 105880

Hardware Kit: HK-180

Kit Components:

Item #	Qty.	Description
1	1	Plow Mount
2	2	Bolt Plate
3	2	Spacer
4	8	5/16-18 X 1-1/4" Hex Flange Bolt
5	8	5/16-18 Hex Flange Nylock Nut
6	2	3/8-16 X 1-1/4" Hex Flange Bolt
7	2	3/8-16 Hex Flange Nylock Nut

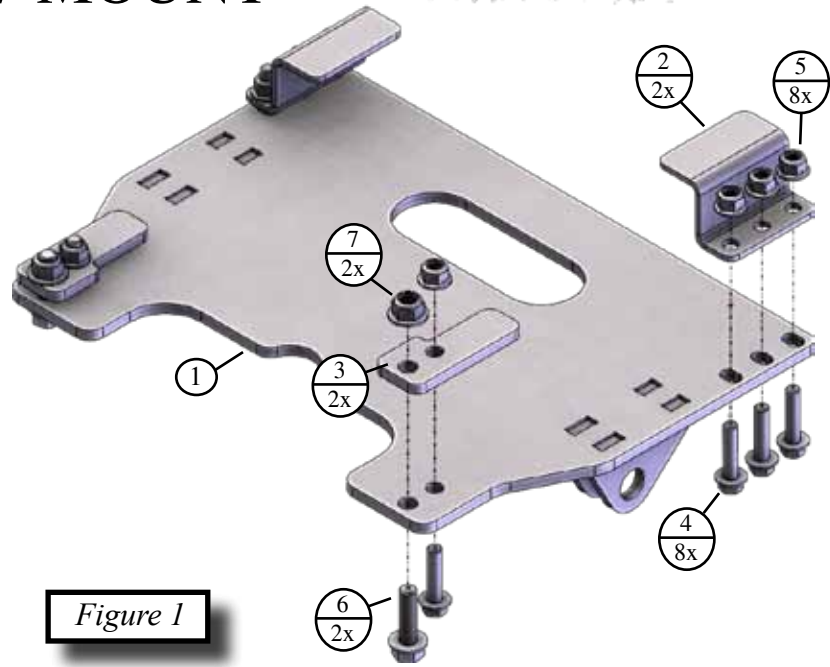


Figure 1

INSTALLATION INSTRUCTIONS:

Note: Make sure all of the hardware needed to complete this mount are in the package. Read through and understand the instructions before installing. Will require cutting of plastic!

1. Remove the two screws (A) from the front frame tubing. Shown in [Figure 2](#).
2. Remove the four screws (B) from the skid plate and let the skid plate hang down. Set the plastic covers (C) aside for now. Shown in [Figure 2](#).
3. Line the holes on the plastic cover (C) up with the holes on the skid plate. Using the plastic cover (C) as a template, cut the skid plate along the edges. Shown in [Figure 3](#).
4. Assemble the two bolt plates (2) loosely onto the plow mount (1) using the 5/16 hardware. Shown in [Figures 1 & 4](#).

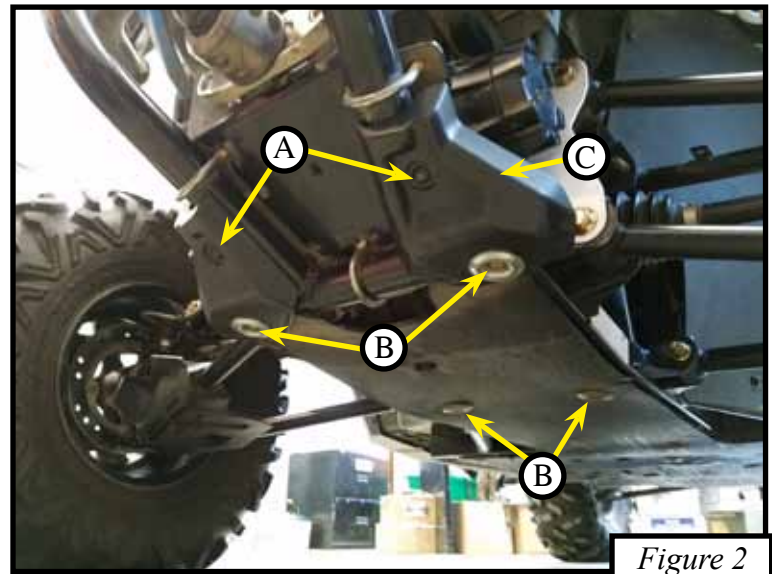


Figure 2

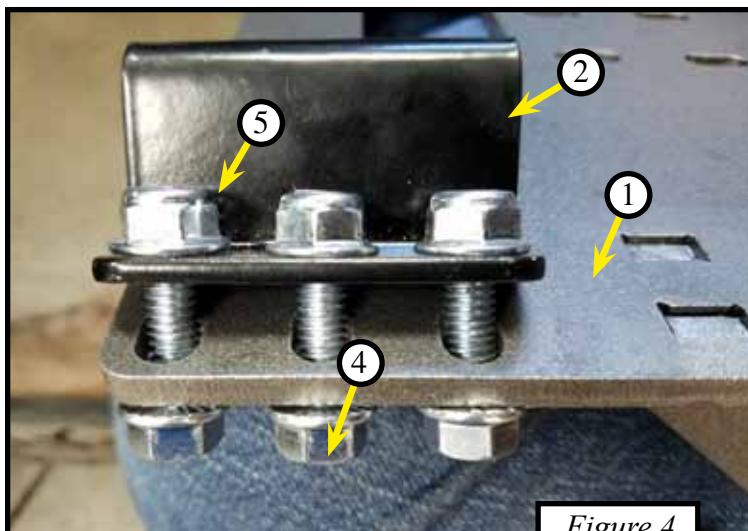


Figure 4

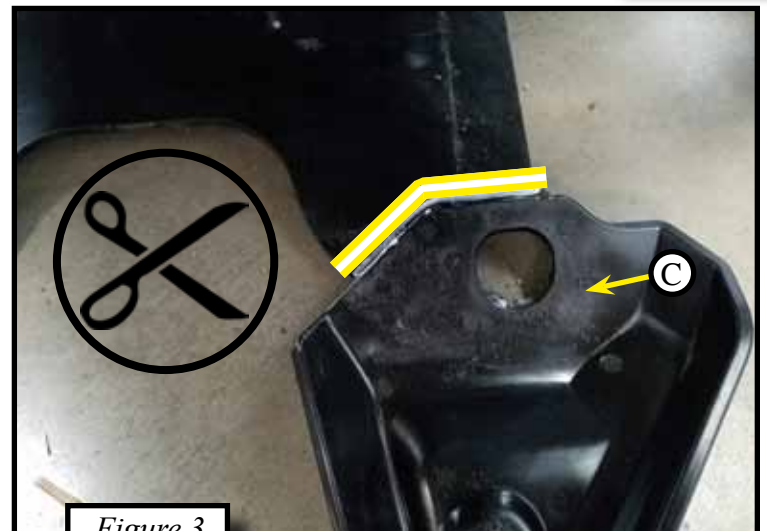


Figure 3

5. On the end of the square frame tubing there is a clip (E) that will need to be removed. Shown in [Figure 5](#).
6. Hold the skid plate (D) back up to the frame and attach the plow mount (1) to the frame tubing sandwiching the skid plate. Shown in [Figure 6](#).
7. Set the metal spacer (3) into the square frame tubing. Shown in [Figures 1 & 7](#).
8. Slide the plastic cover (C) between the plow mount and the spacer (3), and attach them together using the 5/16" bolt and nuts. Shown in [Figure 8](#).
9. Using the plow mount as a template drill the front hole (F) using a 3/8" bit. Attach the 3/8" bolt (6) into the front dilled hole. Shown in [Figures 8 & 9](#).
10. Tighten all hardware down.
11. See ATV Plow Tube System instruction manual for tube attachment.



Figure 5

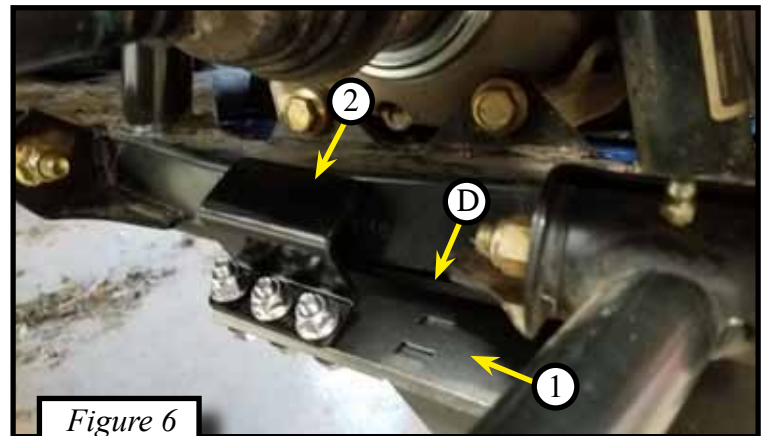


Figure 6

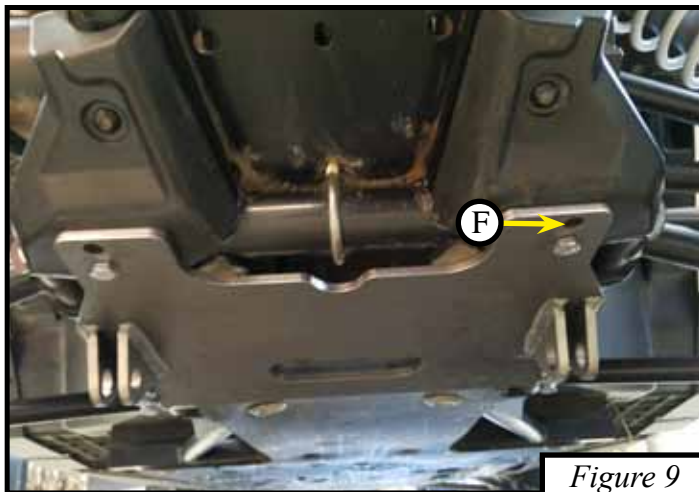


Figure 9



Figure 10

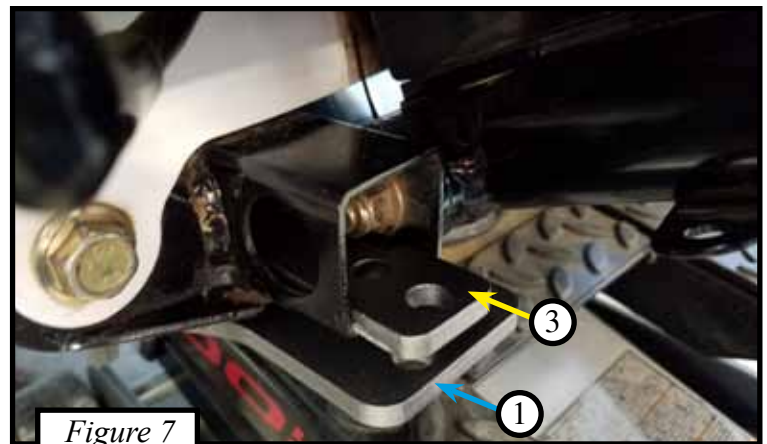


Figure 7

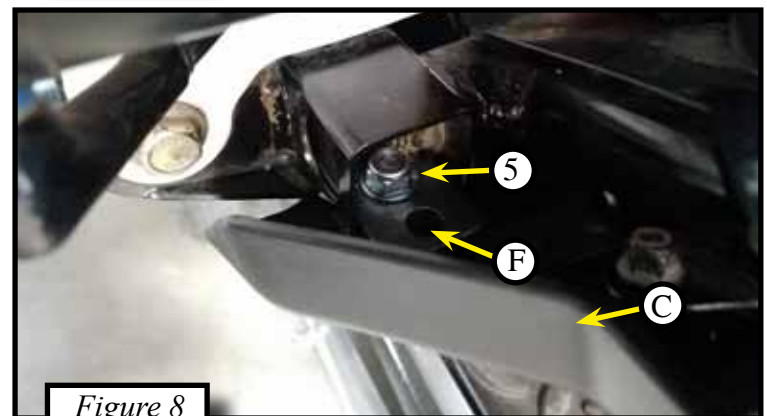


Figure 8

