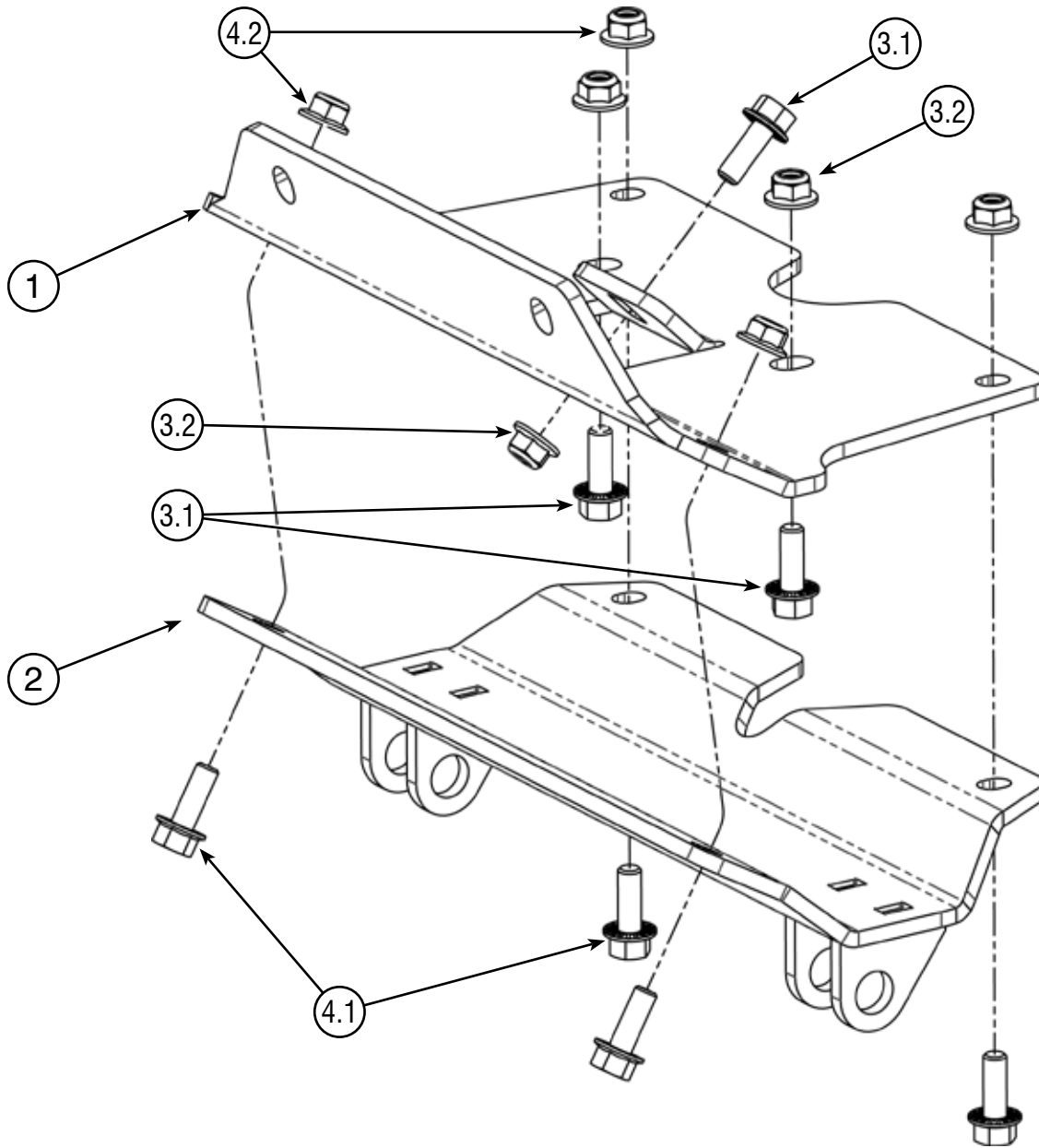


KAWASAKI RIDGE

Plow Mount

PART #106675 Rev A



Kit Components:

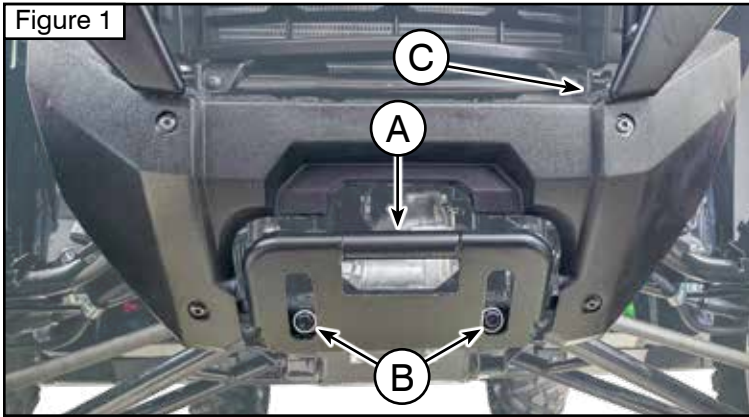
| Item # | Qty. | Description | Item # | Qty. | Description |
|--------|------|--|--------|------|--|
| 1 | 1 | Mounting Bracket (106677) | 3.2 | 3 | 3/8"-16 Hex Nut Flange Nylock GR5 |
| 2 | 1 | Plow Mount (106676) | 4 | 1 | Hardware Kit HK-417 |
| 3 | 1 | Hardware Kit HK-341 | 4.1 | 4 | 3/8"-16 X 1.00" Hex Bolt Flange GR5 Serrated |
| 3.1 | 3 | 3/8"-16 X 1.00" Hex Bolt Flange GR5 Serrated | 4.2 | 4 | 3/8"-16 Hex Nut Flange Nylock GR5 |



INSTALLATION INSTRUCTIONS

Notice

Torque bolts to ANSI Specs (or OEM specs if applicable), unless otherwise stated. After the first use and at the start of each season, check torque.



Note: Make sure all hardware needed to complete this mount is in the package. Thoroughly read through and understand the instructions before installing.

Installation Instructions

1. Loosen Bolts (B) from **Figure 1**. Do not completely remove these bolts yet.
2. Completing one side at a time, Remove Bolt (C) from the rear arm of the Bumper (A). Pull the Bumper (A) forward so the bolt hole in the frame lines up with the rear hole in the bumper arm. Reinsert Bolt (C), Do not fully tighten. See **Figure 2**. Repeat this step on the other side of the machine.
3. Completely remove Bolts (B) from **Figure 1**.
4. *The Plow Mount is attached via holes D, E and F. Bumper is removed for clarity. See **Figure 3**.*
5. Holes (F) from **Figure 3** need to be drilled out with a 7/16" drill bit. **Be careful not to hit anything above the frame with the drill bit.**
6. Hold Mounting Plate (1) up to the machine between the Bumper (A) and the frame of the machine. Secure with Bumper Bolts (B) through Holes (D) as shown in **Figures 3 & 4**. Leave loose.
7. Use Hardware (3.1 & 3.2) to secure Mounting Plate (1) through Holes (E & F) as shown in **Figures 3 & 4**.
8. Tighten all Hardware (B, C, 3.1 & 3.2) evenly as shown in **Figures 2 & 4**.
9. Plow Mount (2) can be installed and removed from Mounting Plate (1). Use hardware (4.1 & 4.2) as shown in **Figure 6** to secure Plow Mount (2) when preparing for winter.

