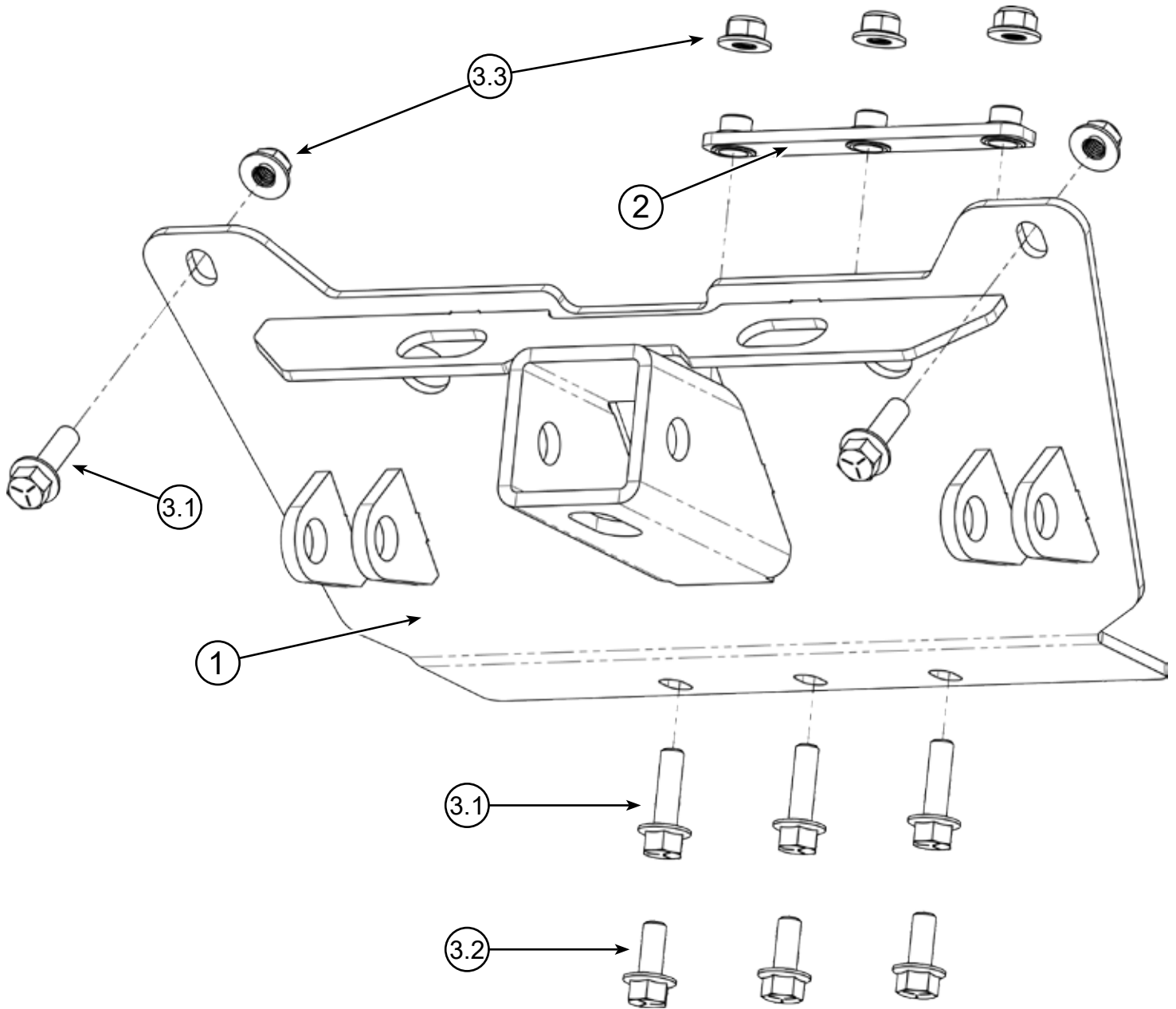


RANGER RECEIVER/PLOW MOUNT

Plow Mount

PART #105255 Rev. L



Kit Components:

Item #	Qty.	Description	Item #	Qty.	Description
1	1	Plow Mount	3.1	5	3/8" - 16 X 1.25" Hex Bolt Flange GR5 Serrated
2	1	Back Plate	3.2	3	3/8" - 16 X .88" Hex Bolt Flange GR5 Serrated
3	1	Hardware Kit HK-051	3.3	5	3/8" - 16 Hex Nut Flange Nylock



INSTALLATION INSTRUCTIONS

Note: Make sure all hardware needed to complete this mount is in the package. Thoroughly read through and understand the instructions before installing.

Installation Instructions

1. Place plow mount (1) up to the machine, as shown in **Figure 1**.
2. While holding the plow mount up to the machine, loosely install the upper Bolts (3.1) and Nuts (3.3), as shown in **Figure 1**.
3. For Diesel Rangers, skip to **Step 6**. For all other machines, continue to the next step.
4. Place Back Plate (2) inside the frame on the top of holes (A), as shown in **Figures 2 and 3**.
5. Attach Plow Mount (1) to bolt plate (2) using 3 Bolts (3.1), as shown in **Figures 1 & 2**.
6. If you are installing this on a Diesel Ranger and the bottom of the frame has a cut-out under the front differential as shown in **Figure 4**, Use Bolts (3.2) and Nuts (3.3) to secure the bottom of the plow mount through holes (A). The Back Plate (2) will not fit in the frame on this machine.
7. Tighten all hardware evenly.

